

A2Z STYLES Measurement Form

Contact: Prasad Akula @ 713-410-0774

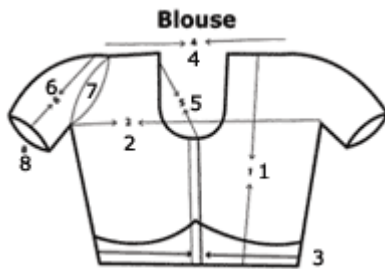
Prasad.akula@gmail.com

Name:

Age:

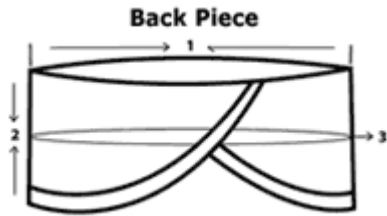
Measurement in	Inches / Cms
Type of Dance	Bharata Natyam / Kuchipudi
Dress Model	Regular / Tripple Fan / Cross Fan/Skirt Model
Dress Material	Imitation Silk
Cloth Colour Options (Hold Ctrl and select second option)	-- Select Your Code -- View Cloth Colour Options
Saree Colour Options	-- Select Your Code -- View Saree Colour Options
Border Colour Options	-- Select Your Code -- View Border Colour Options

Note: Please give body / Tight measurements and we keep sufficient margins to increase the size of the dress in future.



Blouse Specifications

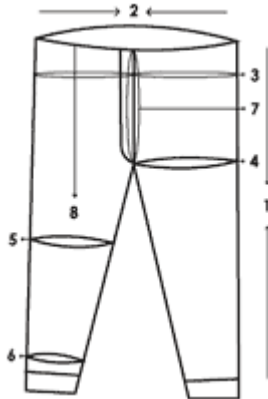
1 Blouse Length Shoulder to Waist	<input type="text"/>
2 Arm Pet to Arm Pet or Chest round	<input type="text"/>
3 Waist round	<input type="text"/>
4 Shoulder Length	<input type="text"/>
5 Neck Length	<input type="text"/>
6 Arm length	<input type="text"/>
7 Arm Pet round	<input type="text"/>
8 Arm round	<input type="text"/>



Back Piece

- 1 Waist Round
- 2 Waist to Buttocks Length
- 3 Hip Round Measurement

Kacham or Bottam Piece

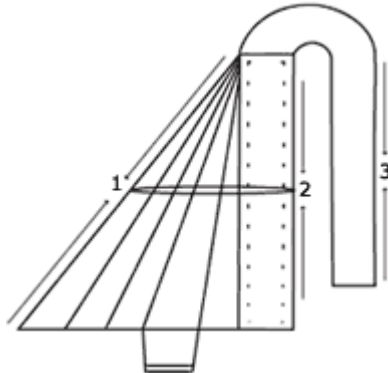


Kacham or Bottom Piece

- 1 Length Waist to Ankle
- 2 Waist round
- 3 Hip Round Measurement
- 4 Thigh Measurement(round)
- 5 Knee round
- 6 Heal round
- 7 **Kiss round ***
- 8 Waist to knee length

* (Measuring from belly bottom to the top & the Hips making a "U" with the measuring tape.)

Paita or Ooni



Paita or Ooni

- 1 Oni length from Shoulder to Waist
- 2 Chest round
- 3 Paita Ooni Back length

Fields marked with asterisk (*) are compulsory.

Note - We do dress designing and stitch the dress as per your requirements and design.

Plain Imitation Silk Colour Code:

You may choose two colour combinations for single dress and with one colour combination of border.

(Hold Ctrl and select second option)

Select Color Code



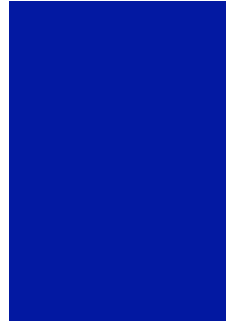
Code 1



Code 2



Code 3



Code 4



Code 5



code 6



Code 7



Code 8



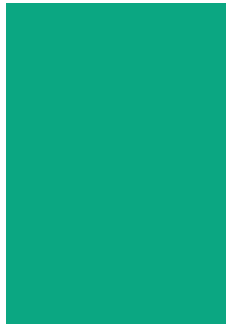
Code 9



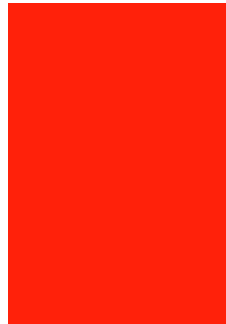
Code 10



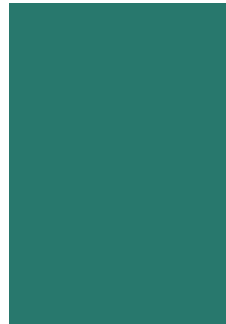
Code 11



Code 12



Code 13



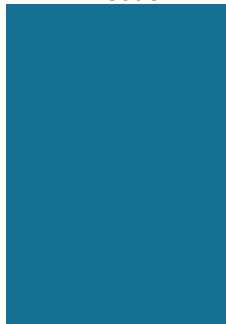
Code 14



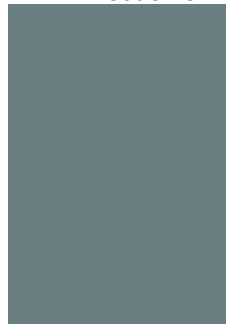
Code 15



Code 16



Code 17



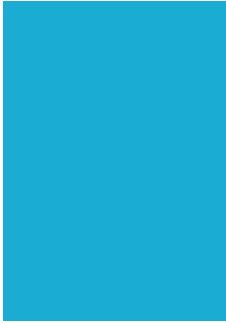
Code 18



Code 19



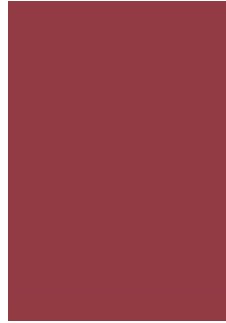
Code 20



Code 21



Code 22



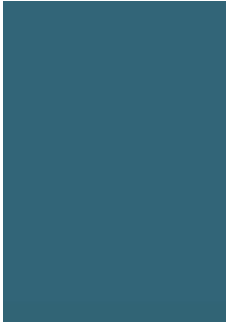
Code 23



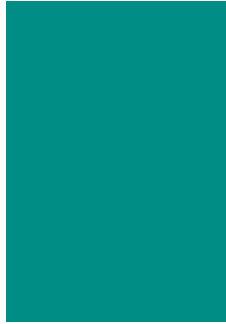
Code 24



Code 25



Code 26



Code 27



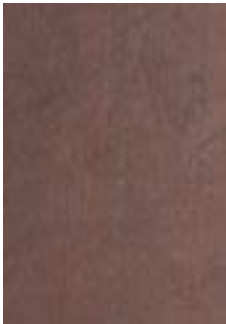
Code 28



Code 29



Code 30



Code 31



Code 32



Code 33



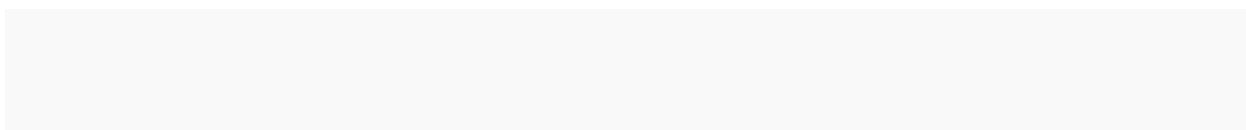
Code 34



Code 35



Code 36



Select Color Code

Border Colour Code:



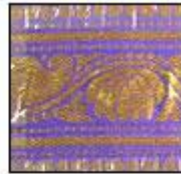
code: P-1



code: P-2



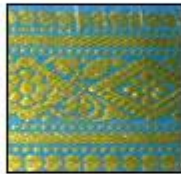
code: M



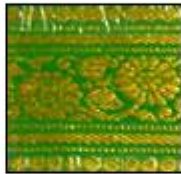
code: B-1



code: B-2



code: B-3



code: G-1



code: Gold



code: R



code: Y



code: B



**A DANCE DRESS WITH 2 COLOR COMBINATION
(No 09 and No 05 from the color chart)**